



# LEEDS CHILDREN'S SERVICES

## THINK LIKE A PONY CIC SAFEGUARDING & CHILD PROTECTION POLICY

Academic Year 2024-25

---

This policy is the intellectual property of Leeds City Council.

Should any organisations outside of the Leeds Local Authority incorporate large sections of this policy without alteration please make acknowledgement of this.




## Contents

1.	AIMS .....	6
2.	LEGISLATION AND GUIDANCE .....	6
3.	DEFINITIONS .....	7
4.	EQUALITY STATEMENT.....	8
5.	ROLES AND RESPONSIBILITIES .....	8
6.	CONFIDENTIALITY AND INFORMATION SHARING .....	14
7.	OPPORTUNITIES TO TEACH SAFEGUARDING – PREVENTATIVE CURRICULUM .....	15
8.	OUR ROLE IN SUPPORTING CHILDREN .....	15
9.	CHILDREN WITH SPECIAL EDUCATIONAL NEEDS, DISABILITIES, OR HEALTH ISSUES .....	15
10.	CHILDREN AT RISK OF SPECIFIC FORMS OF ABUSE .....	16
11	FEMALE GENITAL MUTILATION: THE MANDATORY REPORTING DUTY.....	16
12	RADICALISATION AND TERRORISM.....	17
13	CHANNEL .....	18
14	CHILD ON CHILD ABUSE .....	18
15	SHARING NUDES AND SEMI NUDES .....	19
16	CHILDREN ABSENT FROM EDUCATION.....	21
17	A SAFER SCHOOL CULTURE.....	21
18	SAFER RECRUITMENT, SELECTION AND PRE-EMPLOYMENT VETTING .....	21
19	MANAGING ALLEGATIONS OR SAFEGUARDING CONCERNS AGAINST A MEMBER OF STAFF OR PERSON IN SCHOOL PROCEDURES.....	22
20	TRAINING AND SUPPORT .....	25
21	CHILD PROTECTION RECORDS .....	25
22	CHILDREN’S AND PARENTS’ ACCESS TO CHILD PROTECTION FILES.....	26
23	ARCHIVING.....	27
APPENDIX 1:	DEFINITIONS AND INDICATORS OF ABUSE .....	28
APPENDIX 2	RESPONDING TO CHILDREN WHO REPORT ABUSE.....	32
APPENDIX 3	CAUSE FOR CONCERN FORM .....	33
APPENDIX 4	RECRUITMENT AND SELECTION CHECKLIST .....	35
APPENDIX 5	CHILD EXPLOITATION RESPONSE CHECKLIST .....	38
APPENDIX 6	MACE PANEL REFERRAL FORM .....	39
APPENDIX 7	RADICALISATION RESPONSE CHECKLIST .....	41
APPENDIX 8	MISSING FROM SCHOOL RESPONSE CHECKLIST.....	42
APPENDIX 9	FE SAFEGUARDING INFORMATION SHARING FORM .....	43
APPENDIX 10	LADO NOTIFICATION FORM .....	47
APPENDIX 11	PREVENT REFERRAL FORM.....	51

This Safeguarding & Child Protection Policy is available on the organisations website and is reviewed and ratified annually by the directors or as events, or legislation requires. Any deficiencies or weaknesses identified will be remedied without delay.

Academic year	Designated Safeguarding Lead	Deputy Designated Safeguarding Lead/s	Nominated Governor	Chair of Governors
2024-25	Jacqueline Michaels / Kate Reed		NA	NA

Policy Review date	Date Ratified by directors	Date Shared with staff
09/2024	09/2024	09/2024



**Senior Director / Founder of Think Like a Pony**

Think Like a Pony CIC  
Child Protection and Safeguarding Advice  
Contact List – September 2023

Role / Agency	Name and role	Contact Details
<b>School Designated Safeguarding Lead (DSL) / Child Protection Coordinator</b>	Jacqueline Michaels – Centre Manager Kate Reed – Youth and Family Development Manager and Instructor	<a href="mailto:info@thinklikeapony.co.uk">info@thinklikeapony.co.uk</a> <a href="mailto:Kate.reed@thinklikeapony.co.uk">Kate.reed@thinklikeapony.co.uk</a>
<b>Deputy DSL</b>	NA	
<b>Other DSLs</b>	NA	
<b>Director with responsibility for Child Protection and Safeguarding</b>	Kate Reed – Youth and Family Development Manager and Instructor	
<b>Chair Of Governors</b>	NA	
<b>Designated Teacher for Looked After and previously Looked After Children</b>	DSLs	
<b>SENDCo</b>	NA	
<b>PSHE Coordinator</b>	NA	
<b>Mental Health Lead</b>	DSLs	
<b>Online Safety Coordinator</b>	DSLs	
<b>CSWS Duty and Advice / Front Door Safeguarding Hub</b>	Urgent Child Protection concerns / initial referral	Professionals – 0113 3760336 Members of the public – 0113 2223301
<b>CSWS Emergency Duty Team (out of hours)</b>	Urgent Child Protection concerns	0113 535 0600 <a href="mailto:childrensEDT@leeds.gov.uk">childrensEDT@leeds.gov.uk</a>
<b>Education Safeguarding Team</b>	Advice / Training / Safeguarding Audit	0113 3789685 <a href="mailto:estconsultation@leeds.gov.uk">estconsultation@leeds.gov.uk</a>
<b>Local Authority Designated Officer</b>	Allegations against adults in school	0113 3789687 <a href="mailto:lado@leeds.gov.uk">lado@leeds.gov.uk</a>
<b>NSPCC Whistleblowing Helpline</b>	Allegations against adults in school	0800 028 0285
<b>Cluster Targeted Services Lead</b>	Family Support / Attendance / Early Help / Pupil Counsellor	
<b>PREVENT Team</b>	Prevent training/advice	0113 535 0810 <a href="mailto:prevent@leeds.gov.uk">prevent@leeds.gov.uk</a>

Think Like a Pony is committed to safeguarding and promoting the welfare of children and young people and expects all staff, volunteers, contractors and visitors to share this commitment.

**All staff** refers to all adults, volunteers (including directors) or students on placement, working in any capacity in the school or in activities organised by the school which brings them in to contact with pupils of the school.

**Child Protection** refers to the multi-agency arrangements to identify and protect children who are or may be at risk of or suffering significant harm.

**Safeguarding** refers to the protection, safety and promotion of the welfare of all pupils including when in off-site provision or activities and using ICT. This includes the building of resilience and awareness of risk through the formal and informal curriculum.

**Child** is any pupil under the age of 18.

## Glossary

- DSL            Designated Safeguarding Lead
- DDSL          Deputy Designated Safeguarding Lead
- SENDCo      Special Education Needs and Disabilities Coordinator
- DT             Designated Teacher for Looked After and previously Looked After Children.
- PSHE          Personal, social, health and economic education
- RSE           Relationships, sex and health education
- CSWS          Children's' Social Work Services
- KCSiE          Keeping Children Safe in Education (DfE, September 2023)

## Visitors to school

All visitors must sign in on arrival and collect a visitor's badge and a Centre Information Leaflet which outlines Child Protection and Safeguarding procedures at the Centre and how to report any concerns regarding a child/young person or another adult at the Centre. Visitor badges must be worn at all times when at the Centre. All visitors must sign in. Staff must ensure that visitors to the Centre are supervised as appropriate and the requisite pre-employment checks have been completed as referenced in Part 3 of KCSiE. All contractors must follow the Centre's signing in arrangements.

# Part One:

---

## 1. Aims

1.1 The Centre aims to ensure that:

- Appropriate action is taken in a timely manner to safeguard and promote children's welfare
- All staff are aware of their statutory responsibilities with respect to safeguarding, identifying children in need of early help, at risk of harm or those that have been harmed.
- Staff are properly trained in recognising and reporting safeguarding issues
- A culture of vigilance is created and maintained to ensure that we will also act in the best interests of children to protect them online and offline.
- Systems for reporting abuse are well promoted, easily understood and easily accessible for children

1.2 The Directors and staff of Think Like a Pony CIC (hereinafter referred to as "the Centre") take as our first priority the responsibility to safeguard and promote the welfare of our pupils, to minimise risk and to work together with other agencies to ensure rigorous arrangements are in place within our Centre to identify, assess and support those children who are suffering harm and to keep them safe and secure whilst in our care.

1.3 The responsibilities set out in this policy apply (as appropriate) to all members of the Centre community including pupils, staff, directors, visitors/contractors, volunteers, supply staff, students on placement and trainees working within the Centre. It is fully incorporated into the whole Centre ethos and is underpinned throughout the teaching and within the safety of the physical environment provided for the pupils.

## 2. Legislation and guidance

2.1 This policy is based on the Department for Education's statutory guidance, [Keeping Children Safe in Education \(KCSIE\) 2023](#) and [Working Together to Safeguard Children \(WTTSC 2018\)](#) and the [Governance Handbook](#). We comply with this guidance and the procedures set out by the Leeds Safeguarding Children partnership (LSCP).

2.2 This policy is also based on the following legislation and guidance:

Section 175 of the [Education Act 2002](#), which places a duty on schools and local authorities to safeguard and promote the welfare of pupils

[The School Staffing \(England\) Regulations 2009](#), which set out what must be recorded on the single central record and the requirement for at least one person on a school interview/appointment panel to be trained in safer recruitment techniques

[The Children Act 1989](#) (and [2004 amendment](#)), which provides a framework for the care and protection of children

Section 5B(11) of the Female Genital Mutilation Act 2003, as inserted by section 74 of the [Serious Crime Act 2015](#), which places a statutory duty on teachers to report to the police where they discover that female genital mutilation (FGM) appears to have been carried out on a girl under 18

[Statutory guidance on FGM](#), which sets out responsibilities with regards to safeguarding and supporting girls affected by FGM

[The Rehabilitation of Offenders Act 1974](#), which outlines when people with criminal convictions can work with children

Schedule 4 of the [Safeguarding Vulnerable Groups Act 2006](#), which defines what 'regulated activity' is in relation to children

Statutory [Guidance on the Prevent duty](#), which explains schools' duties under the Counter-Terrorism and Security Act 2015 with respect to protecting people from the risk of radicalisation and extremism

Guidance for safer working practice for those working with children and young people in education settings (GSWP) (Safer Recruitment Consortium Feb 2022) <https://c-cluster-110.uploads.documents.cimpress.io/v1/uploads/d71d6fd8-b99e-4327-b8fd-1ac968b768a4~110/original?tenant=vbu-digital>

[Sharing nudes and semi-nudes: advice for education settings working with children and young people](#) (Department for Digital, Culture, Media & Sport and UK Council for Internet Safety 2020)

[Safeguarding and remote education during coronavirus \(COVID-19\)](#) (DfE, 2021b)

[Children Missing Education – Statutory guidance for local authorities](#) (DfE September 2016)

[When to call the police – Guidance for schools and colleges](#) (NPCC – 2020)

[Education and Training \(Welfare of Children\) Act 2021](#)

Schools and colleges are under a statutory duty to cooperate with the published LSCP arrangements. This policy conforms to locally agreed inter-agency procedures [LSCP - Local protocols for Leeds practitioners \(leedsscp.org.uk\)](#) and has been ratified by the LSCP Education Reference Group. It is available to all interested parties on our website and on request from the main school office. It must be read in conjunction with other relevant policies and procedures and KCSiE (DfE 2023). <https://www.gov.uk/government/publications/keeping-children-safe-in-education--2>

The [Childcare \(Disqualification\) Regulations 2018](#) and [Childcare Act 2006](#), which set out who is disqualified from working with children

### 3. Definitions

3.1 **Safeguarding and promoting the welfare of children** means:

- Protecting children from maltreatment
- Preventing impairment of children's mental or physical health or development
- Ensuring that children grow up in circumstances consistent with the provision of safe and effective care
- Taking action to enable all children to have the best outcomes

3.2 **Child protection** is part of this definition and refers to activities undertaken to prevent children suffering, or being likely to suffer, significant harm.

3.3 Appendix 1 explains the different types and indicators of abuse.

3.4 **Children** includes everyone under the age of 18.

## 4. Equality statement

4.1 Some children have an increased risk of abuse, and additional barriers can exist for some children with respect to recognising or disclosing it. We are committed to anti-discriminatory practice and recognise children's diverse circumstances. We ensure that all children have the same protection, regardless of any barriers they may face.

4.2 We give special consideration to children who:

- Have special educational needs or disabilities or health conditions
- Are young carers
- May experience discrimination due to their race, ethnicity, disability, religion, gender identification, sex or sexual orientation.
- Have English as an additional language
- Are known to be living in difficult situations – for example, temporary accommodation or where there are issues such as substance abuse or domestic violence
- Are at risk of FGM, sexual exploitation, forced marriage, or radicalisation
- Are asylum seekers
- Are at risk due to either their own or a family member's mental health needs
- Are absent from education
- Children who are in care, previously looked after or any children not growing up with their birth family (this covers private fostering and all kinship arrangements)
- Whose parent/carer has expressed an intention to remove them from school to be home educated

## 5. Roles and responsibilities

5.1 Safeguarding and child protection is **everyone's** responsibility. This policy applies to all staff (including those not directly employed by the Centre), volunteers, contractors and directors in the Centre. Our policy and procedures also apply to off-site activities. All staff are expected to read this policy as part of their induction arrangements as well as the documents referenced in section 5.2 (All staff) below and any updates therein.

### 5.2 All staff

5.2.1 All staff working directly with children will read and understand their statutory responsibilities outlined in Part 1 and Annex B of the Department for Education's statutory safeguarding guidance, [Keeping Children Safe in Education](#), and review this guidance at least annually.

5.2.2 Staff who do not work directly with children will read either Part 1 or Annex A as determined by the DSL dependent on their roles, responsibilities and contact with children.

5.2.3 All staff will be aware of:

- Our systems which support safeguarding, including reading and understanding their professional responsibilities as outlined in Guidance for Safer Working Practice (2022) understanding the role of the designated safeguarding lead (DSL/DDSL), reading and understanding the Centre behaviour policy and their safeguarding responses to children who go missing from education during the school day or otherwise and reading and understanding the Centre's online safety policy.
- The early help process and their role in it, including being alert to emerging problems that may warrant Early Help intervention, particularly those identified in



Part 1 of KCSiE. All staff should be reporting emerging problems that may warrant early help intervention to DSL and then discussions around talking with Families First Team tel: 0113 37 81840 or [families.first@leeds.gov.uk](mailto:families.first@leeds.gov.uk).

- That children's behaviours can be indicative of their emotional wellbeing and can be linked to mental health. They should be aware of behaviours that may communicate that poor wellbeing can be an indicator of factors such as abuse, neglect or exploitation. Staff should understand the children's experiences such of abuse, neglect, trauma and adverse childhood experiences can impact on children's mental health, behaviour & education.
- The process for making referrals to local authority children's social work service (CSWS) and for statutory assessments that may follow a referral, including the role they might be expected to play. Fig 1: **Summary of in-school procedures to follow where there are concerns about a child** (Page 13) illustrates the procedure to follow if you have concerns about a child's welfare. Wherever possible, speak to the DSL, DDSL or Founder (in the absence of a DSL) first to agree a course of action. In the absence of a DSL or Founder being available, staff must not delay in directly contacting children's social work Duty and Advice team or the police if they believe a child is at immediate risk of significant harm.
- Our work in partnership with other agencies in the best interests of the children. Requests for service to CSWS will (wherever possible) be made by the Safeguarding Designated Staff, to the CSWS Duty and Advice team (0113 3760336). Where a child already has a child protection social worker, the school will immediately contact the social worker involved or in their absence, the team manager of the child protection social worker.
- What to do if they identify a safeguarding issue or a child tells them they are being abused or neglected, including specific issues such as Female Genital Mutilation (FGM), and how to maintain an appropriate level of confidentiality while liaising with relevant professionals.
- The Centre's procedures for recording any cause for concerns and passing information on to DSLs in accordance with Centre's recording systems.
- The signs of different types of abuse and neglect, as well as specific safeguarding issues, such as child sexual exploitation (CSE), child criminal exploitation (CCE) FGM, radicalisation, child-on-child sexual abuse and serious and violent crime. All staff to be aware safeguarding incidents/ behaviours can occur outside the Centre or be associated with outside factors CSE and CCE are forms of abuse and both occur where an individual or group takes advantage of an imbalance in power to coerce, manipulate or deceive a child into sexual or criminal activity.
- Children absent from education or missing/absconding during the school day can also be a sign of a range of safeguarding concerns including sexual abuse, sexual exploitation or child criminal exploitation.
- Children may not feel ready or know how to tell someone that they are being abused, exploited, neglected, and/or they may not recognise their experiences as harmful.

Appendix 1 details different kinds of abuse.

Appendix 2 provides guidance to staff on how to respond to children who report abuse

### **5.3 The designated safeguarding lead (DSL) and deputy designated staff.**

Our DSLs are Jacqueline Michaels – Centre Manager and Kate Reed – Youth and Family Development Manager and Instructor.

5.3.1 The DSL takes lead responsibility for child protection and wider safeguarding (including online safety and understanding the filtering and monitoring systems which are in place). Refer to DfE Guidance [Meeting digital and technology standards in schools and colleges - Filtering and monitoring standards for schools and colleges - Guidance - GOV.UK \(www.gov.uk\)](https://www.gov.uk/guidance/meeting-digital-and-technology-standards-in-schools-and-colleges-filtering-and-monitoring-standards-for-schools-and-colleges-guidance)

5.3.2 The optimal scenario is to have a trained DSL or DDSL available on site. Where this is not possible (e.g., due to self-isolating), a trained DSL or DDSL will be available to be contacted via phone or online video – for example when working from home.

5.3.3 During term time, the DSL will be available during Centre opening times for staff to discuss any safeguarding concerns. Where a trained DSL (or deputy) is not on site, in addition to the above, a senior leader will assume responsibility for co-ordinating safeguarding on site. Out of hours DSL's can be contact on their personal phone number which is given to all staff members.

5.3.4 When the DSL is absent, the second DSL will act as cover. If both DSL's are unavailable then Lynn Henry (Founder) will act as cover.

5.3.5 If the DSL and deputy are not available, Margot Nillesen – Riding School Manager will act as cover (for example, during out-of-hours/out-of-term activities).

5.3.6 The DSL will be given the time, training, resources and support to:

- Provide advice and support to other staff on child welfare and child protection matters
- Take part in strategy discussions and inter-agency meetings and/or support other staff to do so
- Contribute to the assessment of children by providing as much information as possible as part of the referral process to help social care assessments consider contexts outside the home and enable a contextual approach to harm.
- Refer suspected cases, as appropriate, to the relevant body (children's social care Duty and Advice team, Channel programme, Disclosure and Barring Service, Teaching Regulation Agency and/or police), and support staff who make such referrals directly. Provide support for staff to comply with their mandatory reporting duties in cases where FGM has been identified.
- Kate Reed will ensure that all staff involved in direct case work of vulnerable children, where there are child protection concerns/issues, have access to regular safeguarding supervision. (Ref: LCC Framework for Supervision (2021).).
- The DSL will also keep the Senior Director Lynn Henry informed of any issues and liaise with local authority officers and relevant professionals for child protection concerns as appropriate.
- The DSL is responsible for responding to domestic abuse notifications from the local authority and providing support to children and their families as appropriate
- The Centre will ensure representation / information given for appropriate inter-agency meetings such as Initial and Review Child Protection Conferences, and Planning and Core Group meetings, as well as Family Support Meetings.
- Provide reports as required for meetings. Reports will, wherever possible, be shared with parents/carers at least 24 hours prior to the meeting.
- Where a child at the Centre is subject to an inter-agency child protection plan or any multi-agency risk management plan, the DSL will contribute to the preparation, implementation, and review of the plan as appropriate.
- The designated safeguarding lead and any deputies should liaise with the three

safeguarding partners and work with other agencies in line with Working Together to Safeguard Children (2018). When to call the police (NPCC 2020) should help designated safeguarding leads understand when they should consider calling the police and what to expect when they do.

- Promote the educational outcomes of children with a social worker and other pupils deemed vulnerable. It is essential therefore that the DSL works in close collaboration with the DT and SENDCO as children who are in need of help and protection must also have their learning needs prioritised in planning to ensure education is a protective factor and not only by way of regular attendance at school.

**The full responsibilities of the DSL are set out in Annex C of KCSIE – Role of the designated safeguarding lead. All designated safeguarding leads and deputy safeguarding leads must read and comply with this.**

## **5.4 Directors**

5.4.1 The directors will approve this policy at each review and hold the team to account for its implementation and any actions/recommendations made by the Local Authority in respect to strengthening the school's safeguarding arrangements.

5.4.2 The directors will complete the LA safeguarding and child protection briefing on their strategic roles and responsibilities every three years including online safety training. The directors will ensure that all policies, procedures and training are effective and comply with the law at all times. The directors will ensure that all staff undergo safeguarding and child protection training, including online safety training providing an understanding of the expectations and applicable roles and responsibilities in relation to filtering and monitoring.

5.4.3 The directors will appoint a lead director to monitor the effectiveness of this and other related safeguarding policies (i.e.: online safety, whistleblowing, behaviour etc.) in conjunction with the directors.

5.4.4 In the event that safeguarding concerns, or an allegation of abuse is made against the Founder, the Directors will act as the 'case manager'. Refer also to Section 16.2.

5.4.5 The directors will ensure that the Centre has robust IT filtering and monitoring systems in place and should be informed in part, by the risk assessment required by the Prevent Duty in order to limit children's exposure to online risks. The directors should consider the number and age range of children, those who are potentially at greater risk of harm and how often they access the IT system.

5.4.6 The directors will supply information as requested by the LSCP and the Local Authority Education Safeguarding Team.

**The full responsibilities of the directors are set out in Part Two of KCSIE – The management of safeguarding. The directors will ensure that the Centre is fully compliant with their statutory safeguarding responsibilities.**

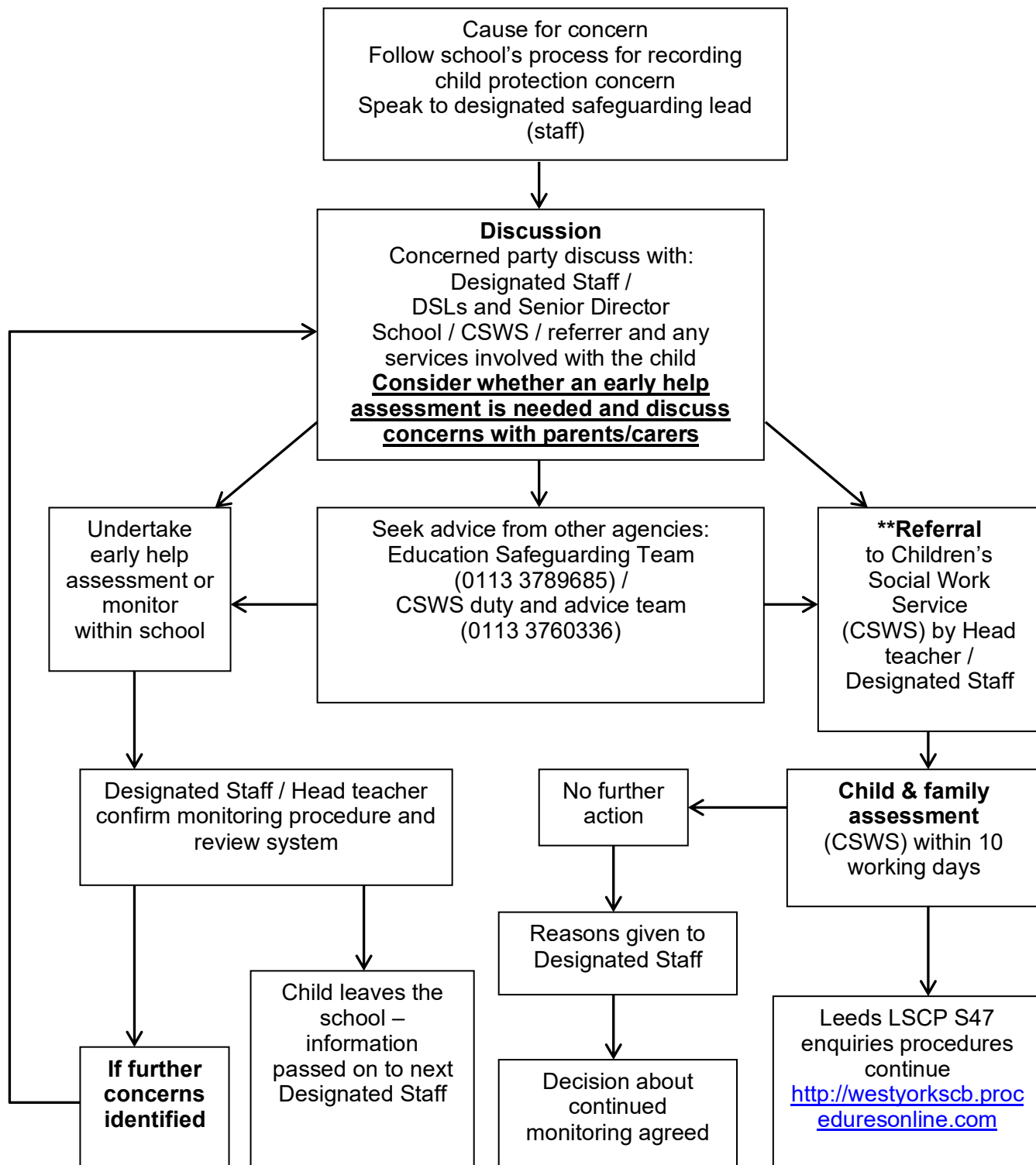
## **5.5 The Senior Director**

5.5.1 The Senior Director Lynn Henry is responsible for the implementation of this policy, including:

- Ensuring that staff, (including temporary and supply staff), and volunteers are informed of this policy as part of their induction

- Communicating this policy to parents when their child joins the Centre and via the Centre website
- Ensuring that the roles and responsibilities of the DSL/DDSL as referenced in Annex C of KCSiE (2023), are reflected in their job description.
- Ensuring that the DSL has appropriate time, training and resources, and that there is always adequate cover if the DSL is absent
- Ensuring that they complete safeguarding and child protection training and that all staff undertake appropriate safeguarding and child protection training and update this every three years
- Acting as the 'case manager' in the event of an allegation of abuse made against another member of staff (including supply staff) or volunteer, where appropriate
- Ensuring that all recommendations made by the Local Authority in relation to strengthening the Centre's safeguarding arrangements are actioned in a timely fashion.

**Fig 1: Summary of in-school procedures to follow where there are concerns about a child**



**\*\* If unhappy about the outcome of the referral to Children's Services Social Care, please refer to: Leeds LSCP Local Protocol: [Concerns Resolution](#).**

## 6. Confidentiality and Information Sharing

- 6.1.1 Confidentiality is an issue that needs to be understood by all those working with children, particularly in the context of safeguarding.
- 6.1.2 The Centre recognises that the only purpose of confidentiality in this respect is to benefit the child. Staff/volunteers and visitors to the Centre should never promise a child that they will not tell anyone about an allegation/report of abuse and must pass any cause for concerns immediately to a designated safeguarding lead.
- 6.1.3 Confidentiality is addressed throughout this policy with respect to record-keeping (see section 18), dealing with reports of abuse (see Appendix 2), allegations of abuse against staff (see section 16.2), information sharing and working with parents (see section 6.2).
- 6.1.4 Timely information sharing is essential for effective safeguarding. This Centre will share safeguarding information as appropriate in keeping with the principles outlined in the government guidance document, [Information sharing: Advice for practitioners providing safeguarding services to children, young people, parents and carers \(DfE 2018\)](#). This guidance has been produced to support practitioners in the decisions they take to share information, which reduces the risk of harm to children and young people and promotes their well-being.
- 6.1.5 Fears about sharing information must not be allowed to stand in the way of the need to promote the welfare, and protect the safety, of children.
- 6.1.6 All staff must have due regard for the relevant data protection principles which allow them to share (in the context of their role) and withhold personal information, as provided for in the Data Protection Act 2018 and GDPR.
- 6.1.7 In order to promote positive educational outcomes for vulnerable children, including children with social workers information that can help to support positive outcomes being achieved will be shared with colleagues that are not DSLs or DDSLs as appropriate.
- 6.1.8 If staff are in any doubt about sharing information, they must speak to the designated staff, or the Founder.

## 6.2 Working with parents and other agencies to protect children

- 6.2.1 Parents/carers will be made aware of our procedures in respect to taking any reasonable action to safeguard the welfare of its students. In cases where the Centre has reason to be concerned that a child may be suffering significant harm, ill treatment, neglect or other forms of harm, staff will follow the procedures for responding to suspected cases of child abuse or neglect outlined in this policy document and contact CSWS Duty and Advice team to discuss their concerns.
- 6.2.2 In keeping with KCSIE, we will endeavour wherever possible to obtain at least two emergency contacts for every child in case of emergencies, and in case there are welfare concerns at the home.
- 6.2.3 In general, we will discuss concerns with parents/carers before approaching other agencies and will seek to inform parents/carers and receive their consent when making a referral to another agency. Appropriate staff will approach parents/carers after consultation with the DSL. The exception to this rule will be in situations where a member of staff has reasonable cause to believe that informing parents/carers of a referral to another agency may increase the risk of significant harm to the child.

- 6.2.4 Parents/carers are informed about our Safeguarding & Child Protection policy through our website, information at referral and updates. A safeguarding & child protection statement is prominent in the reception area.

### **6.3 Multi-agency work**

- 6.3.1 We will co-operate with CSWS in accordance with the requirements of the Children Act 1989 and allow access to child and child protection records for them to conduct section 17 or section 47 assessments.
- 6.3.2 In the best interests of our students, we will work with all relevant professionals and agencies as required to safeguard children and promote their welfare.

## **7. Opportunities to teach safeguarding – Preventative Curriculum**

### **7.1 Our role in the prevention of abuse**

We will identify and provide opportunities for children to develop skills, concepts, attitudes and knowledge to promote their safety and well-being.

- 7.1.1 We will ensure that children are taught about safeguarding, including online safety, and recognise that a one size fits all approach may not be appropriate for all children, and a more personalised or contextualised approach for more vulnerable children, victims of abuse and some SEND children may be needed and we will refer back to the School.

### **7.2 Other areas of work**

- 7.2.1 Our Safeguarding and Child Protection policy cannot be separated from the general ethos of the Centre which is to ensure that children are treated with respect and dignity, feel safe, and are listened to.
- 7.2.2 The Centre's online safety policy is reflective of the requirements set out in KCSiE (2023) in regard to content, contact, conduct and commerce. The Centre's online safety policy is aligned to the Centre behaviour policy and reflects our approach to issues of online safety (including the sharing of nudes and semi-nudes) that empowers us to protect and educate the community in their use of technology and establishes mechanisms to identify, intervene in, and escalate any incident where appropriate.

## **8. Our role in supporting children**

**We will offer appropriate support to individual children who have experienced abuse or who have abused others.**

- 8.1 In cases where children have experienced abuse/abused others, the DSL will ensure that appropriate support is offered and liaise with the Team around the Child.
- 8.2 For children who have sexually harmed or may have sexually harmed peers, where appropriate an AIM Risk Assessment Management Plan (RAMP) will be completed that includes safety and support planning. We will refer this back to the School.

## **9. Children with special educational needs, disabilities, or health issues**

- 9.1 We recognise that while all children have a right to be safe, some children *may* be more vulnerable to abuse e.g., those with a disability, special educational needs, mental health issues or those living with domestic violence or drug/alcohol abusing parents, parents' mental health issues, learning disabilities, children who are in care

or previously looked after, children having adverse childhood experiences etc. Additional barriers can exist when recognising abuse and neglect in this group, including:

- Assumptions that indicators of possible abuse such as behaviour, mood and injury relate to the child's condition without further exploration
- Pupils being more prone to peer group isolation or bullying (including prejudice-based bullying) than other pupils
- The potential for pupils with SEN, disabilities or certain health conditions being disproportionately impacted by behaviours such as bullying, without outwardly showing any signs
- Communication barriers and difficulties in managing or reporting these challenges

9.2 All staff have a role in preventing impairment of children's mental health/emotional wellbeing, including promoting positive mental health and identifying where students are struggling with their Mental Health. We regularly communicate messages to students regarding wellbeing and the promotion of positive mental health strategies through the programme. Support on programmes, resources and guidance is available from the Health and Wellbeing Service ([schoolwellbeing@leeds.gov.uk](mailto:schoolwellbeing@leeds.gov.uk)).

9.3 Concerns regarding a student's mental health/emotional wellbeing should be reported to a member of the Centre safeguarding team in keeping with the Centre's safeguarding reporting arrangement so that students can be offered appropriate support, this may include local or national online services where appropriate. In addition, the Centre will refer back to the school to make referrals to a wide range of external services to secure additional appropriate support for students. We would speak with the team around the child to support with this.

## **10. Children at risk of specific forms of abuse**

10.1 This Centre follows the Leeds LSCP ([www.leedsLSCP.org.uk](http://www.leedsLSCP.org.uk)) online locally agreed multi-agency procedures, in circumstances where children are at risk of or specific forms of abuse as outlined in Part 1 and Annex of B KCSIE.

## **11. Female Genital Mutilation: The Mandatory Reporting Duty**

11.1 The Department for Education's Keeping Children Safe in Education explains that FGM comprises "all procedures involving partial or total removal of the external female genitalia, or other injury to the female genital organs".

11.2 FGM is illegal in the UK and a form of child abuse with long-lasting, harmful consequences. It is also known as 'female genital cutting', 'circumcision' or 'initiation'.

11.3 **Any teacher** who discovers that an act of FGM appears to have been carried out on a **pupil under 18** must immediately (in consultation with the DSL) report this to the police, personally. This is a statutory duty, and teachers will face disciplinary sanctions for failing to meet it.

11.4 The duty above does not apply in cases where a pupil is *at risk* of FGM or FGM is suspected but is not known to have been carried out. Staff must not examine pupils.

11.5 **Any other member of staff** who discovers that an act of FGM appears to have been carried out on a **pupil under 18** must speak to the DSL and follow our local safeguarding procedures.

11.6 **Any member of staff** who suspects a pupil is *at risk* of FGM must speak to the DSL and follow our local safeguarding children's partnership procedures.



## 12 Radicalisation and Terrorism

- 12.1 Radicalisation refers to the process by which a person comes to support terrorism and forms of extremism leading to terrorism. Terrorism is an action that endangers or causes serious violence to a person/people; causes serious damage to property; or seriously interferes or disrupts an electronic system. The use or threat must be designed to influence the government or to intimidate the public and is made for the purpose of advancing a political, religious or ideological cause.
- 12.2 If staff are concerned about a change in the behaviour of an individual or see something that concerns them **(this could be a colleague too)** they must seek advice appropriately with the DSL who must contact the Education Safeguarding Team or the Leeds Prevent Team 0113 5350810 for further advice (see [appendix 9](#)).
- 12.3 Schools and colleges are expected to assess the risk of children being drawn into terrorism, including support for extremist ideas that are part of terrorist ideology. This means being able to demonstrate both a general understanding of the risks affecting children and young people in the area and a specific understanding of how to identify individual children who may be at risk of radicalisation and what to do to support them. The Education Safeguarding Team and the Prevent team can advise and identify local referral pathways.
- 12.4 Effective early help relies on all staff to be vigilant and aware of the nature of the risk for children and young people, and what support may be available.

## 13 Channel

- 13.1 Channel is a voluntary, confidential support programme which focuses on providing support at an early stage to people who are identified as being vulnerable to being drawn into terrorism. Prevent referrals may be passed to a multi-agency Channel panel, which will discuss the individual referred to determine whether they are vulnerable to being drawn into terrorism and consider the appropriate support required. A representative from the school or college may be asked to attend the Channel panel to help with this assessment. An individual's engagement with the programme is entirely voluntary at all stages.

## 14 Child on child abuse

14.1.1 We recognise that children are capable of abusing their peers and that child on child abuse can manifest in many different ways, including bullying, cyber bullying, criminal and sexual exploitation, sexual harassment and violence, initiation/hazing, sharing of nudes and semi-nudes, up skirting (taking a picture under a person's clothing without them knowing, with the intention of viewing their genitals or buttocks to obtain sexual gratification, or cause the victim humiliation, distress or alarm) and abuse within intimate partner relationships. It is very clear that this type of abuse should always be treated seriously, and never just as banter, part of growing up or boys being boys. Our Centre has a zero tolerance approach to such attitudes and behaviours.

14.1.2 We will take steps to minimise the risk of child-on-child abuse by ensuring students can learn about this through the Youth Development Programme. This will support pupils to recognise behaviour that is not appropriate and understand how to stay safe and challenge and report unwanted behaviours. Support for this is available through the Health and Wellbeing Service ([schoolwellbeing@leeds.gov.uk](mailto:schoolwellbeing@leeds.gov.uk)). We will also regularly review the site and Centre activities to further minimise the risk of child on child abuse occurring.

14.1.3 We recognise that abuse can often go unreported or be reported latterly. We will encourage and support students to report child-on -child abuse to trusted adults in their school or the NSPCC helpline.

14.1.4 Most cases of pupils hurting other pupils will be dealt with under our Centre's behaviour policy, but this child protection and safeguarding policy will apply to any allegations that raise safeguarding concerns.

14.1.5 All concerns around child-on-child abuse will be taken seriously, reported, investigated, recorded and managed in line with the child protection procedures outlined in this policy. The DSL is responsible for providing support to all children involved in incidents of peer on peer sexual abuse. Where incidents of child-on-child abuse involve children attending another school setting we will liaise with the relevant DSL/DO at the setting to ensure appropriate information is shared.

14.1.6 We recognise that sexual violence and/or sexual harassment can happen anywhere including educational settings. Where concerns of sexual violence or sexual harassment are witnessed, disclosed or reported to the school (including those that have happened outside of school or online) the concern will be taken seriously. We recognise that sexual violence and harassment exist on a continuum and may overlap; they can occur online and face to face (both physical and verbal) and are never acceptable. In responding to such concerns DSL must (where appropriate) always complete an AIM (Assessment, Intervention, Moving On) checklist and contact the Duty and Advice team if appropriate and follow the principles set out in Part 5 of KCSiE

- 14.1.7 Children who may have/have sexually harmed others will be considered separately from the needs of those who have/may have been subject to sexual harm. Children who have/may have sexually harmed others will be responded to in a way that meets their needs as well as protecting others within the school community through a multi-agency risk assessment management plan (RAMP). Where appropriate there must be a coordinated multi-agency approach to risk assessment which will include involvement of parent/carers, social care, health, police and youth justice (where appropriate). Further support and advice on AIM Checklists and/or undertaking a RAMP can be obtained from the Education Safeguarding Team.
- 14.1.8 We will ensure that all children who may have/has been sexually harmed will be taken seriously and that they will be supported and kept safe. Where appropriate support plans will be put in place for children subjected to sexual harm by their school.
- 14.1.9 In cases where allegations of sexual violence and/or harassment are found to be unsubstantiated, unfounded, false or malicious, the DSL will consider whether the child or person who has made the allegation is in need of support or may have been abused by someone else. This will be referred back to the school and in cases where the report is found to be deliberately invented or malicious the school will consider whether it is appropriate to take any disciplinary action in keeping with the school's behaviour management policy
- 14.2 Where child exploitation (ie, criminal, sexual, trafficking, modern day slavery etc), or the risk of it, is suspected, frontline practitioners must notify the designated member of staff for child protection, in line with the child protection policy reporting systems.
- 14.2.1 The DSL must complete the child exploitation response checklist for partners (see [Appendix 7](#)) and refer to the table at the end of the tool to help decide how to proceed. A copy of the completed tool must be kept in the child's child protection records for future reference. The DSL can also refer a pupil to the monthly Multi-agency Child Exploitation (MACE) meeting (see [Appendix 8](#)) if it is felt that the criteria for referral is met and a discussion is warranted, information should be emailed to [chs.mace@leeds.gov.uk](mailto:chs.mace@leeds.gov.uk). Information provided should include name; date of birth; what the risks are; what has been put in place to lessen the risk; and the plan that the child is subject to. Referrals will be triaged and if selected, the social worker, team manager or other relevant practitioner involved will be invited to attend the MACE meeting for a short discussion.
- 14.2.2 If the child /young person already has an allocated social worker, the DSL must contact them (or their team manager) to discuss any concerns about child exploitation. Where children may currently be looked after or previously looked after the DSL should also notify the Designated Teacher for children looked after.
- 14.2.3 A copy of the child exploitation risk identification tool for partners (see [Appendix 7](#)) can be obtained from the [LSCP Website](#).
- 14.2.4 We will ensure the Centre, works in partnership with parents / carers and other agencies as appropriate.

## **15 Sharing Nudes and Semi Nudes**

### **Staff responsibilities when responding to an incident**

- 15.1 If any adult at the Centre is made aware of an incident involving the consensual or non-consensual sharing of nude or semi-nude images/videos (also known as 'sexting' or 'youth produced sexual imagery'), they must report it to the DSL immediately.

They must **not**:

- View, copy, print, share, store or save the imagery yourself, or ask a pupil to share or download it (if you have already viewed the imagery by accident, you must report this to the DSL)
- Delete the imagery or ask the pupil to delete it
- Ask the pupil(s) who are involved in the incident to disclose information regarding the imagery (this is the DSL's responsibility)
- Share information about the incident with other members of staff, the pupil(s) it involves or their, or other, parents and/or carers
- Say or do anything to blame or shame any young people involved

## **16 DSL Responsibilities**

16.1 Following a report of an incident, the DSL will hold an initial review meeting with appropriate Centre staff – this may include the staff member who reported the incident and the safeguarding or leadership team that deals with safeguarding concerns. This meeting will consider the initial evidence and aim to determine:

- Whether there is an immediate risk to pupil(s)
- If a referral needs to be made to the police and/or children's social care
- If it is necessary to view the image(s) in order to safeguard the young person (in most cases, images or videos should not be viewed)
- What further information is required to decide on the best response
- Whether the image(s) has been shared widely and via what services and/or platforms, (this may be unknown)
- Whether immediate action should be taken to delete or remove images, or videos, from devices or online services
- Any relevant facts about the pupils involved which would influence risk assessment
- If there is a need to contact another school, college, setting or individual
- Whether to contact parents or carers of the pupils involved (in most cases parents/carers should be involved)

The DSL will make an immediate referral to police and/or children's social care if:

- The incident involves an adult
- There is reason to believe that a young person has been coerced, blackmailed, or groomed, or if there are concerns about their capacity to consent (for example, owing to special educational needs)
- What the DSL knows about the images or videos suggests the content depicts sexual acts which are unusual for the young person's developmental stage, or are violent
- The imagery involves sexual acts and any pupil in the images or videos is under 13
- The DSL has reason to believe a pupil is at immediate risk of harm owing to the sharing of nudes and semi-nudes (for example, the young person is presenting as suicidal or self-harming)

16.2 If none of the above apply then the DSL, in consultation with the Senior Director and other members of staff as appropriate, may decide to respond to the incident without involving the police or children's social care. The decision will be made and recorded in line with the procedures set out in this policy.

## 17 Children who are absent from education

17.1 A child who is absent as well as missing from education is a potential indicator of abuse or neglect. It will be the child's Schools responsibility where a child is reported to be missing education to comply with their statutory duty to inform the local authority of any pupil who falls within the reporting notification requirements outlined in [Children Missing Education – Statutory guidance for local authorities \(DfE September 2016\)](#) and follow the Leeds Children's Services LA procedure and contact: [cme@leeds.gov.uk](mailto:cme@leeds.gov.uk). Tel: 0113 3789686.

17.2 Children who are absent, abscond or go missing during the school day are vulnerable and at potential risk of abuse, neglect, CSE or CCE including involvement in county lines. The Centre staff members must follow the Centre's procedures for dealing with children who are absent/ go missing, particularly on repeat occasions, to help identify the risk of abuse and neglect including sexual abuse or exploitation and to help prevent the risks of their going missing in future (see Appendix 10).

## 18 A Safer School Culture

**The Directors will ensure that the following appropriate policies, and procedures are in place and shared with staff at the point of induction, in order for appropriate action to be taken in a timely manner to safeguard and promote children's welfare:**

- Whistle Blowing/Confidential reporting policies (guidance to staff and volunteers on how they can raise concerns and receive appropriate feedback on action taken when staff have concerns about any adult's behaviour)
- School's procedures for managing children who are missing from education
- Guidance on Safer Working Practices
- Safeguarding and Child Protection policy (including online safety).
- School behaviour policy
- The names, roles and responsibilities of the designated safeguarding lead and any deputies.

## 19 Safer Recruitment, selection and pre-employment vetting

19.1 The Centre pays full regard and commitment to following the safer recruitment, selection and pre-employment vetting procedures as outlined in part three of KCSiE

19.2 The Centre will maintain a single central record which demonstrates the relevant vetting checks required including: a barred list check, DBS check at the correct level, identity, qualifications, prohibition order and right to work in the UK. (see Part 3 of KCSiE).

19.3 All recruitment materials will include reference to the Centre's commitment to safeguarding and promoting the wellbeing of pupils. (see [Appendix 6](#))

19.4 The Centre will ensure that all recruitment panels include at least one person that has undertaken the safer recruitment consortium, safer recruitment training as recommended by the Local Authority/Leeds LSCP.

19.5 For individuals who have lived or worked outside the UK, in addition to the same checks as all other staff, the school will complete any additional checks required to satisfy themselves that the individual is suitable to work with children. This may include obtaining a letter from the professional regulatory authority in the country (countries) in which the candidate has worked confirming that they have not imposed any sanctions or restrictions, and /or that they are aware of any reason why they are unsuitable to teach where possible.

19.6 The Centre will ensure that written risk assessments are undertaken in situations where information provided on DBS certificates necessitates so. Written risk assessments must be undertaken for all volunteers **not** engaging in regulated activity. Advice and support for carrying out risk assessments can be accessed through the Education Safeguarding Team.

19.7 The school will inform shortlisted candidates that online searches may be done as part of due diligence checks

19.8 Copies of documents used to verify the successful candidate's identity, right to work and required qualifications should be kept in their personnel file.

## **20 Managing allegations or safeguarding concerns against a member of staff or person in Centre procedures.**

20.1 These procedures must be followed in any case in which it is alleged that a member of staff (including supply staff), director, visiting professional or volunteer has met the harm test, this includes where an adult has:

- a) behaved in a way that has harmed a child or may have harmed a child
- b) possibly committed a criminal offence against or related to a child
- c) behaved towards a child or children in a way that indicates s/he may pose a risk of harm to children
- d) behaved or may have behaved in a way that indicates they may not be suitable to work with children. *(This includes any behaviour that may have happened outside that might make the individual unsuitable to work with children. This is known as transferable risk.)*

20.2 All adults working at the Centre have a duty to disclose to the Senior Director where their relationships and associations both within and outside of the workplace (including online) may have implications for safeguarding children.

20.3 Examples of behaviours that would warrant an allegation or safeguarding concern by a member of staff could include:

- Physical, for example intentional use of force as a punishment, slapping, use of objects to hit with, throwing objects or rough physical handling.
- Emotional, for example intimidation, belittling, scapegoating, sarcasm, lack of respect for children's rights, and attitudes which discriminate on the grounds of race, gender, sex, disability or sexuality.
- Sexual, for example sexualised behaviour towards pupils, grooming, sexual harassment, sexual assault and rape, sending inappropriate messages through social media and other technologies.
- Neglect which may include failing to act to protect a child or children, failing to seek medical attention or failure to carry out appropriate/proper risk assessment etc.

20.3.1 A safeguarding complaint that meets the above criteria must be reported to the Senior Director ("case manager") immediately. If the complaint involves the Senior Director, then the next most senior member of staff must be informed and the directors / committee. In our Centre the named case manager is Lynn Henry. They will follow the processes outlined in this section.

20.3.2 Where a Senior Director determines that a safeguarding allegation does not meet the harm threshold in line with the criteria above they will refer the matter to be

managed in line with paragraphs 20.6 - 20.7 (inc.) by a designated manager with appropriate safeguarding training.

20.4 All staff must fully understand that any adult behaviours that deviate from the Guidance for Safer Working Practice, including inappropriate conduct outside of work are a concern, even if they are low-level. Low-level concerns are concerns that do not meet the harm test/allegations threshold. Examples of such behaviour include:

- *Being over familiar with children*
- *Having favourites*
- *Taking photographs of children on their mobile phone*
- *Engaging with a child on a one-to-one basis in a secluded area or behind a closed door; or*
- *Humiliating pupils*

20.6 The case manager should gather as much information about the alleged incident as necessary in order to establish whether there is substance to the allegation. In situations where the case manager determines that the harm test has not been met the case manager must ensure that there is a clear record of the incident, include any actions (including whether any HR advice had been sought and actioned) taken to address the concern raised. This record must be kept confidential, stored securely and comply with the Data Protection Act 2018 and the UK GDPR (2018). Records of low level concerns will be reviewed so that any patterns of recurring low level concerns can be identified and responded to appropriately, this may include a referral to the LADO where repeated behaviours indicate an individual may not be suitable to work with children.

20.7 All low level concern records will be kept until the individual leaves their employment.

20.8 In situations where the case manager has sufficient information to suggest that the harm test/allegations threshold has been met, the case manager must use the local authority designated officer (LADO) notification form (see [Appendix 12](#)) in order to assess the level of concern, **prior to contacting the LADO**. As part of this initial consideration, the case manager should consult with their HR. The completed LADO notification form must be sent to [lado@leeds.gov.uk](mailto:lado@leeds.gov.uk) **within one working day of the allegation being made**. This will assist the case manager and HR with the LADO to decide on the most appropriate course of action. This includes when to inform the member of staff of the concerns raised. Parents or carers of the child or children involved should be told about the allegation as soon as possible if they do not already know of it.

20.9 The case manager **must** not carry out an investigation or **directly interview** any child/ witness/ or the individual whom the concern relates too, until the above process has been duly completed and relevant partners have been consulted. However, statements of any alleged incidents of harm should be obtained as appropriate at the earliest opportunity in order to establish facts from relevant individuals.

20.10 A multi-agency allegations management meeting may be arranged to look at the complaint in its widest context. The case manager must attend this meeting, which will be arranged by the LADO. All issues must be recorded, and the outcome reached must be noted to ensure closure.

20.11 In many cases it may be appropriate to provide further training and support to staff/volunteers and ensure that they are clear about the expectations for their conduct.

20.12 In more serious cases, allegations may be investigated under the formal disciplinary procedures and, where allegations are upheld, formal warnings issued as well as specific training and support. In cases where children/young people may be at further risk and/or evidence/witnesses may be compromised and/or the allegations are so serious that they may, if upheld, constitute gross misconduct, suspension of the member of staff/volunteer may be appropriate and should be considered in line with the Centre's Disciplinary Policy.

20.13 Any staff/volunteers who are dismissed by the Centre for gross misconduct or cumulative misconduct relating to safeguarding of children/young people will be referred to the DBS for consideration of barring. Similarly, where the Centre has a reasonable belief that the member of staff/volunteer would have been dismissed by the Centre had they been employed at the time of the conclusion of investigations, they will be referred to the DBS. The Centre will keep written records of all of the above.

- **LADO Contacts: Claire Ford, or Jo Peake Tel: 0113 3789687**
- **Advice can also be sought from Deborah Jobson – Team Manager Education Safeguarding Team 0113 3789475**

20.15 Where a staff member feels unable to raise an issue with their employer or feels that their genuine concerns are not being addressed, staff can contact any of the professionals named in the above paragraph, in addition to other whistleblowing channels which may be open to them.

20.16 The Leeds City Council whistleblowing policy states that concerns can be raised by the following methods:

- Whistleblowing hotline 0113 3788008 (dedicated hotline answered by a member of the Internal Audit team or an answerphone).
  - E-mail [concerns@leeds.gov.uk](mailto:concerns@leeds.gov.uk)
  - In writing Internal Audit, 3rd Floor West, Civic Hall, Leeds, LS1 1JF
- The NSPCC whistleblowing helpline is available for staff who do not feel able to raise concerns regarding child protection failures internally. Staff can call: 0800 028 0285 – line is available from 8:00am to 8:00pm, Monday to Friday and Email: [help@nspcc.org.uk](mailto:help@nspcc.org.uk).



## 21 Training and Support

All staff members will be made aware of systems within our Centre that support safeguarding, and these will be explained to them as part of our staff induction. This includes: the Centre's safeguarding/child protection policy; the Centre's safer working practice document and the whistleblowing procedures, as well as their responsibilities to read and understand KCSiE Part 1 and Annexe B, this must be done as part of their induction and reviewed annually.

- 21.1 We recognise the stressful and traumatic nature of child protection work. Support is available for any member of staff from Jacqueline Michaels and Kate Reed. Access to regular and timely supervision is an essential form of support for all designated safeguarding staff. Children's Services Education Safeguarding team are also potentially available for advice and support (Tel: 0113 3789685).
- 21.2 Designated Safeguarding staff must have attended the 3-day Children's Services Education child protection training course. **They will attend refresher training at least every two years.**
- 21.3 The Centre will ensure all staff including temporary and volunteers receive induction. All staff will access basic child protection training including online safety as part of the Centre's induction arrangements and refresher training at least every three years. All staff should have regular safeguarding, child protection training and online safety updates (for example, via email, e-bulletins, staff meetings), as required, but at least annually, to provide them with relevant skills and knowledge to safeguard children effectively. Training will include briefings on how to manage a report of child-on-child sexual violence or harassment and on the government's anti-radicalisation strategy, PREVENT, to enable staff to identify children at risk of being drawn into terrorism and to challenge extremist ideas. Access to training can be via the Children's Services Education Safeguarding Team and the LSCP.
- 21.4 The Senior Director will attend appropriate 1 day safeguarding training at least every three years.
- 21.5 Directors will attend specific training for their role, updated at least every three years.
- 21.6 Any training accessed through third party/independent providers must reflect the LSCP protocols and the LSCP minimum standards checklist.
- 21.7 The DSL must complete the National Safer Recruitment Training and refresh this training every five years.

## 22 Child Protection Records

- 22.1 **The responsibility to maintain, process, share, transfer and store child protection and safeguarding records in accordance with the Data Protection Act 2018 and the GDPR principles is the responsibility of the DSL and any safeguarding deputies. Child protection information will be held securely, with access being restricted to the DSL and their deputies, Founder and in cases of Early Help, the nominated lead professional, if this is not a designated safeguarding lead/officer. For further information please see [Early Help](#). The following information must be kept securely with restricted access, whether paper or electronic:**

- Chronology (summary of significant events and the actions and involvement of the Centre)
- A clear and comprehensive summary of the concern
- Details of how the concern was followed up and resolved
- A note of any action taken, decisions reached and the outcome.
- All completed child protection cause for concern records
- Any child protection information received from the child's previous educational establishment
- Records of discussions, telephone calls and meetings with colleagues and other agencies or services
- Professional consultations
- Letters and emails sent and received relating to child protection matters
- Referral forms sent to CSWS, other external agencies or education-based services
- Minutes or notes of meetings, e.g., child protection conferences, core group meetings, etc., copied to the file of each child in the family, as appropriate
- Formal plans for, or linked to, the child e.g., child protection plans, Early Help (previously known as CAF's), risk assessments etc
- A copy of any support plan for the pupil concerned (see **Error! Reference source not found.**)

22.2 When a DSL member of staff resigns their post or no longer has child protection responsibility, there will be a full face to face handover/exchange of information with the new post holder.

22.3 In exceptional circumstances when a face to face handover is unfeasible, it is the responsibility of the Senior Director to ensure that the new post holder is fully conversant with all procedures and case files.

22.4 All DSLs receiving current (live) files or closed files must keep all contents enclosed and not remove any material.

22.5 All receipts confirming file transfer must be kept in accordance with the recommended retention periods. For further information refer to the archiving section.

## 23 Children's and parents' access to child protection files

23.1 Under Data Protection legislation (General Data Protection Regulation & Data Protection Act 2018) a pupil or their nominated representative have a number of legal rights in respect of information relating to them. These rights include the right to access and the right to rectification of inaccurate data. Therefore, all information will be accurately recorded, objective in nature and expressed in a professional manner.

23.2 Any child who has a child protection file has a right to request access to it. However, neither the child nor the parent has an automatic right to see all the information held in child protection records. Information can be withheld if disclosure:

- could cause serious harm or is likely to cause serious harm to the physical or mental health or condition of the child or another person; or
- could reveal that the child or another person has been a subject of or may be at risk of child abuse, and the disclosure is not in the best interests of the child; or
- is likely to prejudice an on-going criminal investigation; or
- information about the child also relates to another person who could be identified from it, or the information has been given by another person who could be identified as the source, unless the person has consented to the

disclosure or the person providing the information is an employee of the establishment or the Local Authority.

- 23.3 It is best practice to make reports available to the child or their parents unless the exceptions described above apply. If an application is made to see the whole record, advice can be sought from the Leeds Adults, Health and Children's Information Governance Hub.

Contact email: [IMG.AC@leeds.gov.uk](mailto:IMG.AC@leeds.gov.uk)

Telephone: 0113 3784251.

- 23.4 The establishment's report to the child protection conference will (wherever possible) be shared with the child, if old enough, and parent at least two days before the conference.

## **24 Archiving**

- 24.1 The School that the pupil attended until statutory school leaving age (or the school where the pupil completed sixth form studies) is responsible for retaining any child protection records they may hold. The Centre will provide the School with any Safeguarding information from the Centre for their records. The recommended retention periods is 35 years from closure when there has been a referral to CSWS. If no referral has been made to CSWS, the child protection record will be retained until the child's 25th birthday, after which point the file will be destroyed confidentially/deleted from their electronic system. The decision of how and where to store child protection files will be made by the school via the governing board. Due to sensitivity of the information, the records will continue to be held in a secure area with limited access e.g., designated officer. The DSL of the School is responsible for ensuring that all CP files are archived in accordance with the timescales referenced above. The DSL is responsible for ensuring that the appropriate timeframes for archiving and destroying child protection records referenced above are set on electronic systems accordingly for each pupil.

## Appendix 1: Definitions and indicators of abuse

Reference: Working Together to Safeguard Children (DfE 2018). See also KCSiE Part one and Annex B.

**Neglect:** Neglect is the persistent failure to meet a child's basic physical and/or psychological needs, likely to result in the serious impairment of the child's health or development. Neglect may occur during pregnancy as a result maternal substance abuse. Once a child is born, neglect may involve a parent or carer failing to:

- Provide adequate food, clothing and shelter (including exclusion from home or abandonment)
- Protect a child from physical and emotional harm or danger
- Ensure adequate supervision (including the use of inadequate care-givers)
- Ensure access to appropriate medical care or treatment

It may also include neglect of, or unresponsiveness to, a child's basic emotional needs.

Examples which may indicate neglect (it is not designed to be used as a checklist):

- Hunger
- Tiredness or listlessness
- Child dirty or unkempt
- Poorly or inappropriately clad for the weather
- Poor school attendance or often late for school
- Poor concentration
- Affection or attention seeking behaviour
- Untreated illnesses/injuries
- Pallid complexion
- Stealing or scavenging compulsively
- Failure to achieve developmental milestones, for example growth, weight
- Failure to develop intellectually or socially
- Neurotic behaviour

**Physical abuse:** Physical abuse may involve hitting, shaking, throwing, poisoning, burning or scalding, drowning, suffocating or otherwise causing physical harm to a child. Physical harm may also be caused when a parent or carer fabricates the symptoms of, or deliberately induces, illness in a child.

Examples which may indicate physical abuse (not to be used as a checklist):

- Patterns of bruising; inconsistent account of how bruising or injuries occurred
- Finger, hand or nail marks, black eyes
- Bite marks
- Round burn marks, burns and scalds
- Lacerations, wealds
- Fractures
- Bald patches
- Symptoms of drug or alcohol intoxication or poisoning
- Unaccountable covering of limbs, even in hot weather
- Fear of going home or parents being contacted
- Fear of medical help
- Fear of changing for PE
- Inexplicable fear of adults or over-compliance
- Violence or aggression towards others including bullying
- Isolation from peers

**Sexual abuse:** involves forcing or enticing a child or young person to take part in sexual activities, not necessarily involving a high level of violence, whether or not the child is

aware of what is happening. The activities may involve physical contact, including assault by penetration (for example rape or oral sex) or non-penetrative acts such as masturbation, kissing, rubbing and touching outside of clothing. They may also include non-contact activities, such as involving children in looking at, or in the production of, sexual images, watching sexual activities, encouraging children to behave in sexually inappropriate ways, or grooming a child in preparation for abuse. Sexual abuse can take place online, and technology can be used to facilitate offline abuse. Sexual abuse is not solely perpetrated by adult males. Women can also commit acts of sexual abuse, as can other children.

Examples which may indicate sexual abuse (it is not designed to be used as a checklist):

- Sexually explicit play or behaviour or age-inappropriate knowledge
- Anal or vaginal discharge, soreness or scratching
- Reluctance to go home
- Inability to concentrate, tiredness
- Refusal to communicate.
- Thrush, Persistent complaints of stomach disorders or pains
- Eating disorders, for example anorexia nervosa and bulimia
- Attention seeking behaviour, self-mutilation, substance abuse
- Aggressive behaviour including sexual harassment or molestation
- Unusually compliant
- Regressive behaviour, Enuresis, soiling
- Frequent or open masturbation, touching others inappropriately
- Depression, withdrawal, isolation from peer group
- Reluctance to undress for PE or swimming
- Bruises, scratches in genital area

**Emotional abuse:** Emotional abuse is the persistent emotional maltreatment of a child such as to cause severe and persistent adverse effects on the child's emotional development. It may involve conveying to children that they are worthless or unloved, inadequate, or valued only insofar as they meet the needs of another person. It may include not giving the child opportunities to express their views, deliberately silencing them or 'making fun' of what they say or how they communicate. It may feature age or developmentally inappropriate expectations being imposed on children. These may include interactions that are beyond the child's developmental capability, as well as overprotection and limitation of exploration and learning, or preventing the child in participating in normal social interaction. It may also involve seeing or hearing the ill-treatment of another. It may involve serious bullying (including cyber bullying), causing children frequently to feel frightened or in danger, or the exploitation or corruption of children. Some level of emotional abuse is involved in all types of maltreatment

Examples which may indicate emotional abuse (it is not designed to be used as a checklist):

- Over-reaction to mistakes, continual self-deprecation
- Delayed physical, mental, emotional development
- Sudden speech or sensory disorders
- Inappropriate emotional responses, fantasies
- Neurotic behaviour: rocking, banging head, regression, tics and twitches
- Self-harming, drug or solvent abuse
- Fear of parents being contacted
- Running away / Going missing
- Compulsive stealing
- Masturbation, Appetite disorders - anorexia nervosa, bulimia
- Soiling, smearing faeces, enuresis

N.B.: Some situations where children stop communication suddenly (known as “traumatic mutism”) may indicate maltreatment.

**Child Sexual Exploitation:** Child sexual exploitation is a form of child sexual abuse. It occurs where an individual or group takes advantage of an imbalance of power to coerce, manipulate or deceive a child or young person under the age of 18 into sexual activity (a) in exchange for something the victim needs or wants, and/or (b) for the financial advantage or increased status of the perpetrator or facilitator. The victim may have been sexually exploited even if the sexual activity appears consensual. Child sexual exploitation does not always involve physical contact; it can also occur through the use of technology.

Reference: Child Sexual Exploitation. *Definition and a guide for practitioners, local leaders and decision makers working to protect children from child sexual exploitation* (DfE 2017)

All staff should ensure they are aware of and respond to wider safeguarding issues outlined in KCSiE 2023 Annex B, this includes further information on:

- Child abduction and community safety incidents
- Children and the court system
- Children who are absent from education
- Children with family members in prison
- Child Criminal Exploitation (CCE) and Child Sexual Exploitation (CSE)
- County lines
- Modern Slavery and the National Referral Mechanism
- Cybercrime
- Domestic abuse
- Homelessness
- So-called ‘honour-based’ abuse (including Female Genital Mutilation and Forced Marriage)
- Preventing radicalisation (including the Prevent duty and Channel)
- Child on child abuse
- Sexual violence and sexual harassment between children in schools and colleges (including Upskirting)

### **Non-recent abuse –**

Non-recent child abuse, sometimes called historical abuse, is when an adult was abused as a child or young person under the age of 18. Sometimes adults who were abused in childhood blame themselves or are made to feel it’s their fault. But this is never the case: there’s no excuse for abuse.

### **Responses from parents**

Research and experience indicate that the following responses from parents may suggest a cause for concern across all four categories:

- An unexpected delay in seeking treatment that is obviously needed
- An unawareness or denial of any injury, pain or loss of function (for example, a fractured limb)
- Incompatible explanations offered, several different explanations or the child is said to have acted in a way that is inappropriate to her/his age and development
- Reluctance to give information or failure to mention other known relevant injuries
- Frequent presentation of minor injuries
- Unrealistic expectations or constant complaints about the child
- Alcohol misuse or other drug/substance misuse
- Parents request removal of the child from home

- Violence between adults in the household

## **Children with special educational needs and disabilities**

When working with children with special educational needs and disabilities, practitioners need to be aware that additional possible indicators of abuse and/or neglect may also include:

- A bruise in a site that might not be of concern on an ambulant child such as the shin, might be of concern on a non-mobile child. The LSCP have a multi-agency protocol to support professionals in making informed judgements for bruising in non-independently mobile children.  
<https://www.leedsscp.org.uk/LSCB/media/Images/pdfs/Multi-agency-Bruising-Protocol-for-Children-Not-Independently-Mobile-V4.pdf>
- Not getting enough help with feeding leading to malnourishment
- Poor toileting arrangements
- Lack of stimulation
- Unjustified and/or excessive use of restraint
- Rough handling, extreme behaviour modification e.g., deprivation of liquid medication, food or clothing, disabling wheelchair batteries
- Unwillingness to try to learn a child's means of communication
- Ill-fitting equipment e.g., callipers, sleep boards, inappropriate splinting.
- Misappropriation of a child's finances
- Invasive procedures

## **Appendix 2 Responding to children who report abuse.**

When a child tells me about abuse s/he has suffered, what must I remember?

- Stay calm
- Do not transmit shock, anger or embarrassment.
- Reassure the child. Tell her/him you are pleased that s/he is speaking to you.
- Never enter into a pact of secrecy with the child. Assure her/him that you will try to help but let the child know that you will have to tell other people in order to do this. State who this will be and why.
- Tell her/him that you believe them. Children very rarely lie about abuse; but s/he may have tried to tell others and not been heard or believed.
- Tell the child that it is not her/his fault.
- Encourage the child to talk but do not ask "leading questions" or press for information.
- Listen and remember.
- Check that you have understood correctly what the child is trying to tell you.
- Praise the child for telling you. Communicate that s/he has a right to be safe and protected.
- Do not tell the child that what s/he experienced is dirty, naughty or bad.
- Do not take photographs or make videos of any injuries reported by a child.
- It is inappropriate to make any comments about the alleged offender.
- Be aware that the child may retract what s/he has told you. It is essential to record all you have heard.
- At the end of the conversation, tell the child again who you are going to tell and why that person or those people need to know.
- As soon as you can afterwards, make a detailed record of the conversation using the child's own language. Include any questions you may have asked. Do not add any opinions or interpretations.

NB It is not education staff's role to investigate reports of abuse. Their role is to observe that something may be wrong, ask about it, listen, be available and respond appropriately.

### **Immediately afterwards**

You must not deal with this yourself. All reports of abuse must be recorded and responded to in keeping with the professional roles and responsibilities outlined in Fig 1: Summary of in-school procedures to follow where there are concerns about a child (Page 13)



### Appendix 3 Cause for Concern Form

Page 1 of 2

Strictly Confidential

Note: Please do not interpret what is seen or heard; simply record the facts. After completing the form, pass it immediately to the Designated Teacher.

Name of child..... Class / Tutor group.....

Name of staff member completing form.....

Day..... Date..... Time..... Place.....  
(of observed behaviour / discussion / report of abuse)

**Nature of incident / concern including relevant background** (Record child's word verbatim and any wishes and feelings expressed)

Signed: \_\_\_\_\_

Action/passed to \_\_\_\_\_

For: Designated Safeguarding Lead Officer Use

Name: \_\_\_\_\_ Date: \_\_\_\_\_ Time \_\_\_\_\_

Action Taken	By whom	Outcome
Discuss with child  Ensure the child's wishes and feelings are ascertained where appropriate and fully recorded.		
Monitoring sheet		
Check behaviour database, for recent incidents, that might be significant to inform assessment		
Contact parents Please tick  Telephone Call ____ Meeting: ____ Email : ____		
Refer as appropriate (i.e., CSWS, cluster, family support etc.)		
Other (Please specify)		

## Appendix 4 Recruitment and Selection Checklist

Post \_\_\_\_\_

Date \_\_\_\_\_

Recruitment and selection checklist	Initials	Date
<b>Pre-interview:</b>		
<b>Planning</b> - Timetable decided: job specification and description and other documents to be provided to applicants, reviewed and updated as necessary. Application form seeks all relevant information and includes relevant statements about references etc		
<b>Vacancy advertised</b> (where appropriate) Advertisement includes reference to safeguarding policy, that is, statement of commitment to safeguarding and promoting welfare of children and need for successful applicant to be DBS checked		
<b>Applications on receipt</b> - Scrutinised – any discrepancies/anomalies/gaps in employment noted to explore if candidate considered for short-listing		
<b>Short-list prepared</b>		
<b>References – seeking</b> Sought directly from referee on short-listed candidates; ask recommended specific questions; include statement about liability for accuracy		
<b>References – on receipt</b> Checked against information on application; scrutinised; any discrepancy/issue of concern noted to take up with referee and/or applicant (at interview if possible) <b>(If received by email – accompanying email to verify authenticity. If not from professional email address, follow up to ensure authenticity)</b>		
<b>Invitation to interview</b> - Includes all relevant information and instructions and the <b>self-disclosure form</b> .		
<b>Interview arrangements</b> - At least two interviewers; panel members have authority to appoint; have met and agreed issues and questions/assessment criteria/standards		
<b>Online checks</b> – Exploring any content publicly available online that might compromise their professional role so this can be discussed with candidates at interview		
<b>Self-Disclosure</b> – Completed self-disclosure is submitted and seen by the member of the panel who is safer recruitment trained.		
<b>Interview</b> - Explores applicants' suitability for work with children as well as for the post		
<b>Note:</b> identity and qualifications of successful applicant verified on day of interview by scrutiny of appropriate original documents; copies of		

documents taken and placed on file, where appropriate applicant completed application for DBS disclosure		
<b>Conditional offer of appointment:</b> pre appointment checks. Offer of appointment is made conditional on satisfactory completion of the following pre-appointment checks and, for non-teaching posts, a probationary period		
<b>References before confirmation of appointment:</b> (if not obtained and scrutinised previously) <b>(If received by email – accompanying email to verify authenticity. If not from professional email address, follow up to ensure authenticity)</b>		
<b>Identity</b> (if that could not be verified at interview) Evidence to be kept in HR file		
<b>Qualifications</b> (if not verified on the day of interview) Evidence to be kept in HR file		
<b>Permission to work in UK, if required</b> Evidence to be kept in HR file		
<b>School record sight of DBS certificate</b> - where appropriate satisfactory DBS certificate.		
<b>DBS Barred list check</b> – applicant is not barred from working with Children <b>(this must be completed before the applicant commences work)</b>		
<b>Childcare (Disqualification) Regulations 2009 Letter</b> – for any staff who work in childcare provision or who are directly concerned with the management of such provision as defined in the statutory guidance.		
<b>Health</b> – the candidate is medically fit Medical Pre Employment Questionnaire		
<b>Prohibition from Teaching Work Check</b> – For those carrying out teaching work <b>(see below)</b> the teacher has not been included in the prohibition list or interim prohibition list or has a GTCE sanction.		
<b>Qualified Teacher Status (QTS) Check</b> – (for teaching posts in maintained schools) the teacher has obtained QTS or is exempt from the requirement to hold QTS (for teaching posts in FE colleges) the teacher has obtained a Post Graduate Certificate of Education (PGCE), or Certificate of Education (Cert. Ed) awarded by a higher education institution, or the FE Teaching Certificate conferred by an awarding body		
<b>Overseas Checks</b> – for individuals who have lived or worked abroad in the last 5 years. <b>(For those carrying out teaching work within the EEA area this will include an EEA prohibition order check through Employer Access until Jan 21, after this date it will include a reference from any education employer overseas in the same period)</b>		

<b>Statutory Induction Completed</b> (for teachers who obtained QTS after 7 May 1999 and are not employed as NQTs)		
<b>Risk Assessment</b> – for Volunteers a written Risk assessment in relation to undertaking an Enhanced DBS		
<b>Child Protection &amp; Online safety training</b> and other induction such as H&S, Safe Working Practice / code of staff behaviour, etc Including: <b>Safeguarding &amp; Child Protection Policy</b> <b>Safer Working Practice Guidance</b> <b>Whistleblowing procedures</b> <b>KCSiE Part 1 or Annex A &amp; Annexe B</b> <b>ICT Acceptable Use Policy</b> <b>Online Safety Policy &amp; Guidance</b> Children Missing Education Policy Behaviour Policy		

Each of the following activities is teaching work: planning and preparing lessons and courses for pupils, delivering\* lessons to pupils; assessing the development, progress, and attainment of pupils; and reporting on the development, progress, and attainment of pupils.

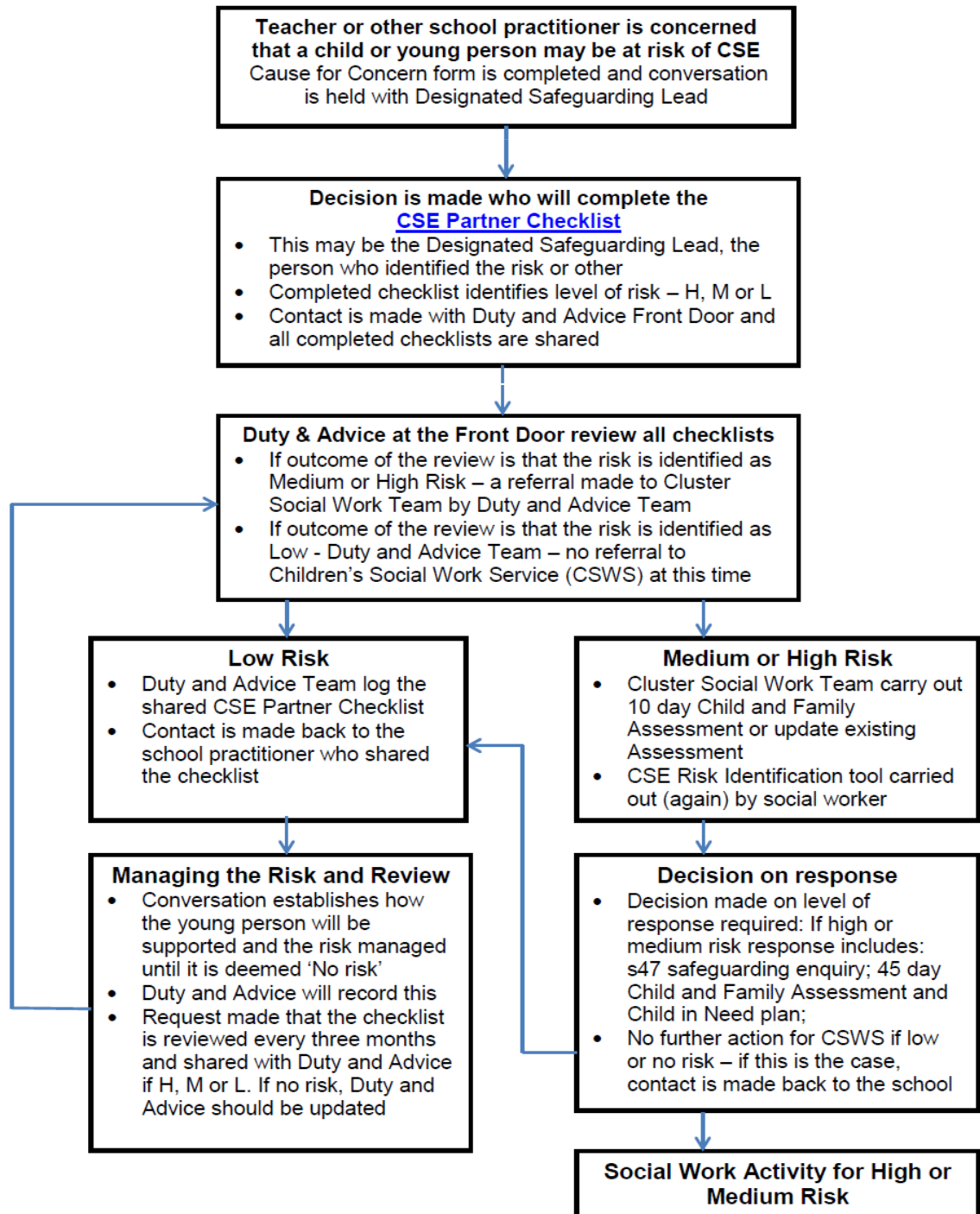
\* “delivering” includes delivering lessons through distance learning or computer aided techniques. The activities specified above are not teaching work for the purposes of the Regulations if the person carrying out the activity does so (other than for the purposes of induction) subject to the direction and supervision of a qualified teacher(2) or other person nominated by the head teacher to provide such direction and supervision.

\* “delivering” includes delivering lessons through distance learning or computer aided techniques. The activities specified above are not teaching work for the purposes of the Regulations if the person carrying out the activity does so (other than for the purposes of induction) subject to the direction and supervision of a qualified teacher(2) or other person nominated by the head teacher to provide such direction and supervision.

## Appendix 5 Child Exploitation Response Checklist

### Responding to identified concerns about Child Sexual Exploitation (CSE) in schools

Education professionals can also use the [WY Police CSE information report form](#) on the Leeds LSCB website to share any information which could help identify possible perpetrators of CSE, or children at risk of CSE.



## Appendix 6 MACE Panel Referral Form

Please submit this form via email to [CHS.MACE@leeds.gov.uk](mailto:CHS.MACE@leeds.gov.uk)

### Referrer's Details

Referrer's Name:	
Referrer's Agency:	
Telephone:	
Email:	
Date of Referral:	

### Child's Details

Name:			
DOB:		Mosaic ID:	
Ethnicity:		Gender:	
Address:		Sibling(s):	
Is the child open to CSWS?	Yes / No	Is the child open to Early Help?	Yes / No
Does the child have a disability or SEN?		Is the child attending an educational provision? <i>(Please state)</i>	Yes / No
What type of educational provision does the child attend? <i>(Please state details of their timetable and attendance)</i>			
What service(s) are currently working with the child?			
Type of Exploitation: (please tick)	CSE <input type="checkbox"/>	CCE <input type="checkbox"/>	Both CSE & CCE <input type="checkbox"/>
Has the child experienced online abuse? <i>(If yes, please state which online platforms/names)</i>	Yes / No		
Has a Child Exploitation Risk Assessment (Toolkit) been completed? <i>(please tick)</i>	(please delete) Yes / No	Date of last toolkit:	
Assessed Level of Risk:	No Risk Risk	Low Risk	Medium Risk      High

	<input type="checkbox"/>	<input type="checkbox"/>	<input type="checkbox"/>
VRMP in place?	Yes / No	Has there been an FGC?	Yes / No
Has a Mapping Meeting taken place?	Yes / No	Is the child part of a peer group of children identified as being at risk of exploitation?	Yes / No
Has the child been discussed at MACE previously? <i>If so, please provide a summary of previous MACE actions / interventions.</i>			
What is the main presenting issue(s): <i>What is happening right now for the child that you are concerned about in relation to potential exploitation? (e.g., If the child is going missing, how often, where do they go missing to if known, what do missing episodes look like?) Consider what the associated risk(s) are.</i>			
What concern(s) are the presenting issue(s) causing? <i>What are you worried will happen to the child?</i>			
What or who are protective factor(s) in the child's life?			

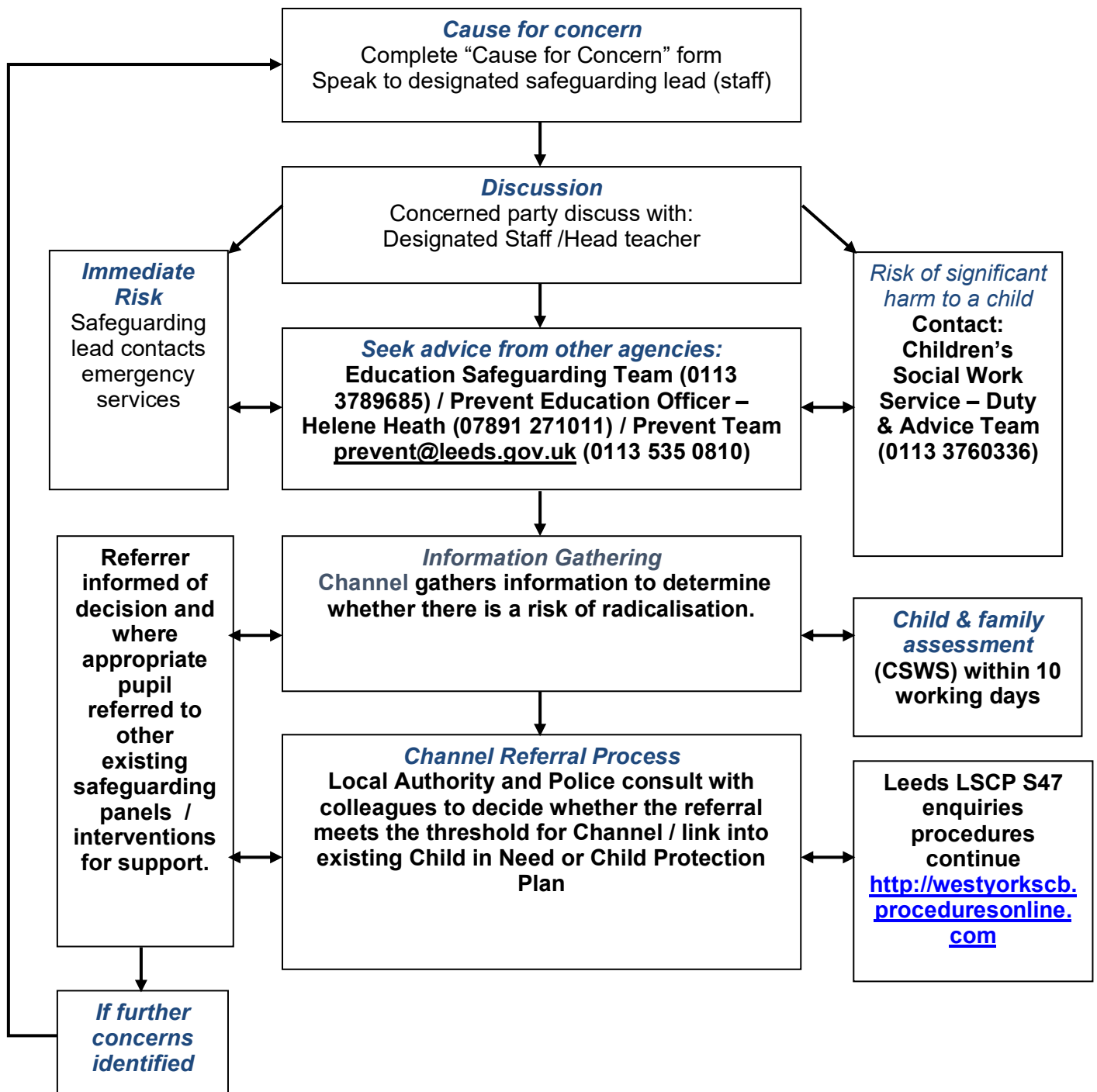
**TO BE COMPLETED INTERNALLY:**

Screened By:	Date:	Has the referral been accepted? Yes / No	MACE Panel Date:
If referral not accepted, please state why:			

**Appendix 7 Radicalisation Response Checklist**



Summary of in-school procedures to follow where there are potential radicalisation concerns about a child/member of staff

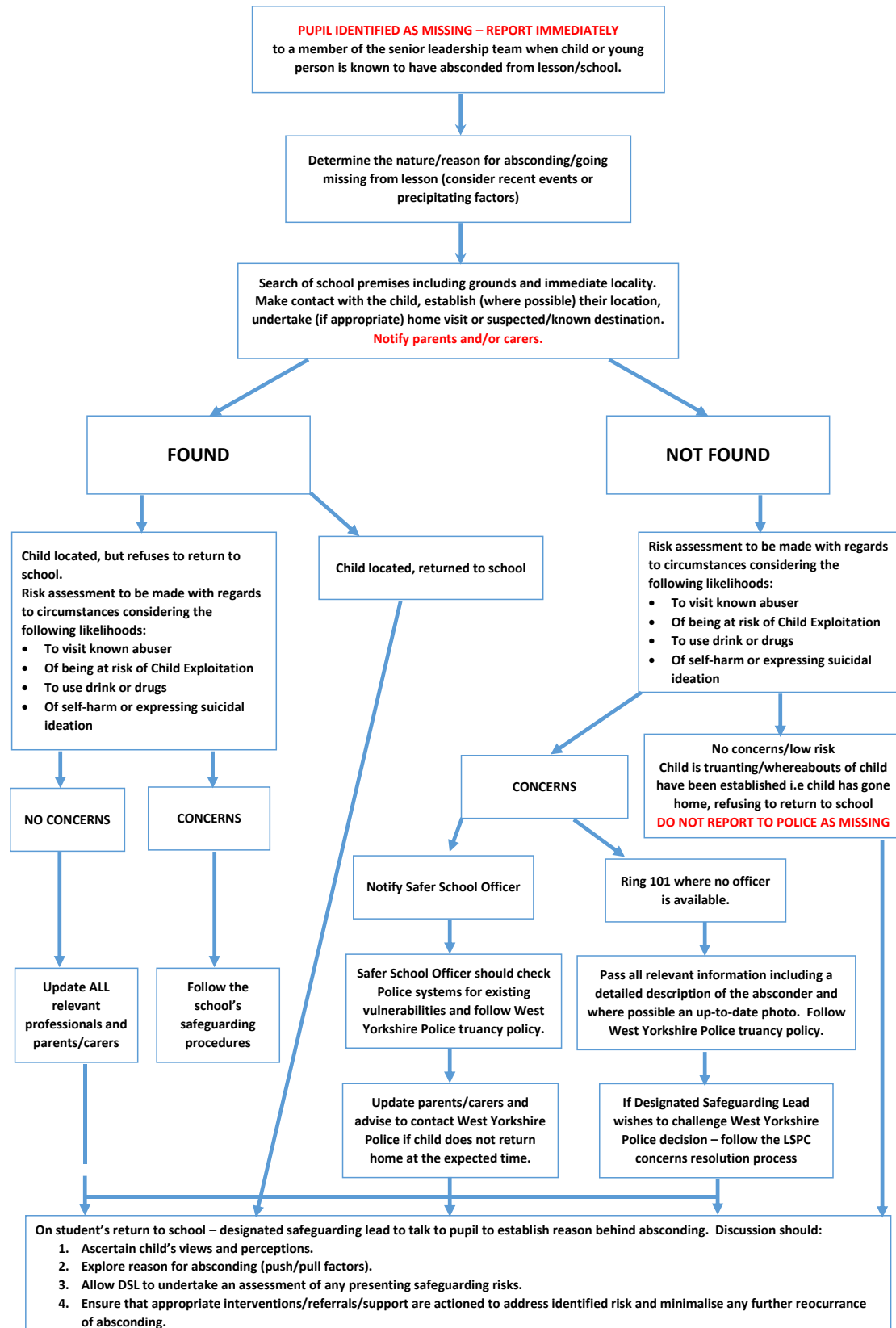


Further information and relevant guidance documents are available from the Prevent Team or directly upon request from [education.training@leeds.gov.uk](mailto:education.training@leeds.gov.uk)

## Appendix 8 Missing from School Response Checklist

Referral pathway for reporting children and young people missing /absconded during the school day.

\*Think Like a Pony will inform the child's school – host school if a child is missing\*



## Appendix 9 FE Safeguarding Information Sharing Form

<b>Name</b>			
<b>Date of Birth</b>	<b>Unique Learner Number</b> _____		
<b>Gender Identity</b>	Male <input type="checkbox"/>	Female <input type="checkbox"/>	Transgender <input type="checkbox"/>
	Non-Binary <input type="checkbox"/>	Genderqueer <input type="checkbox"/>	Gender-fluid <input type="checkbox"/>

Please indicate the nature of the incident or safeguarding issue that you have been concerned about either in the past or currently.

Physical Abuse	<input type="checkbox"/>	Sexual Abuse	<input type="checkbox"/>	Emotional Abuse	<input type="checkbox"/>
Neglect	<input type="checkbox"/>	Mental ill Health	<input type="checkbox"/>	Suicidal intent	<input type="checkbox"/>
Self-Harm	<input type="checkbox"/>	Forced Marriage	<input type="checkbox"/>	Risk to others	<input type="checkbox"/>
Prevent	<input type="checkbox"/>	CSE	<input type="checkbox"/>	Faith Abuse	<input type="checkbox"/>
Financial Abuse	<input type="checkbox"/>	Domestic Violence	<input type="checkbox"/>	Female Genital Mutilation	<input type="checkbox"/>
Fabricated/Induced Illness	<input type="checkbox"/>	Gangs and Youth Violence	<input type="checkbox"/>	Harmful Sexual Behaviour	<input type="checkbox"/>
Institutional abuse	<input type="checkbox"/>	Missing from home	<input type="checkbox"/>	Sexting	<input type="checkbox"/>
Trafficking	<input type="checkbox"/>	Missing in education	<input type="checkbox"/>	Substance abuse	<input type="checkbox"/>
*Child Looked After	<input type="checkbox"/>	COVID-19 related issues	<input type="checkbox"/>		

**Other/Additional information(Please State):**

**Are there any current or relevant historical safeguarding concerns?**

*Please can you provide details of the concerns that you have noted. Please also indicate if the concern was referred to any agencies (i.e., children's social work services, adult social care, police) and the outcome of the referral? Feel free to use additional sheets if required. **Please ensure that CPOMS safeguarding records are transferred within 5 days of confirmation that the student is on role.***

Safeguarding Issue	Date	What action was taken / Referred to agency?

**Please can you give full details including contact details of which agencies are currently working with the student?**

Children's Social Work Services		Adult Social Care	
Probation		Youth Offending Services	
CAMHS		Police	
Other, Please state			

**Has the student been subject to a Child in Need Plan, a Child Protection Plan, Early Help Plan, Education Health Care Plan, Personal Education Plan or RAMP (for Harmful Sexual Behaviour) Please give further details about the support they are currently receiving.**

--

What areas of support would you recommend the student will need at College?							
Additional Learning Support	<input type="checkbox"/>	Life Skills	<input type="checkbox"/>	Family support	<input type="checkbox"/>	Substance Misuse	<input type="checkbox"/>
Risk of offending or re-offending	<input type="checkbox"/>	Financial <i>*CLA are entitled to bursaries and discretionary funding.</i>	<input type="checkbox"/>	Health Advice	<input type="checkbox"/>	Emotional Wellbeing	<input type="checkbox"/>
Basic Skills	<input type="checkbox"/>	Housing	<input type="checkbox"/>	Counselling	<input type="checkbox"/>	Other, please state below	<input type="checkbox"/>
Risk Management Plan	<input type="checkbox"/>	<i>(Please indicate if this is for risk to others, risk to themselves or relating to sexually harmful behaviour)</i>					
Please can you provide further information concerning any recommendations for support?							

Please can you provide your details below:	
Name:	Position:
Organisation:	Tel No:
Email Address:	Date:

## CONSENT TO SHARE INFORMATION PRIOR TO ENROLMENT

### To be completed by student

I Insert Name **give consent for the above information to be shared with** Insert  
name of provider

Date	
Signature of student	

If consent from student has not been sought or you wish the FE provider to contact you directly for further information pertaining to this pupil, please provide a contact name and number of the relevant designated safeguarding lead.

Name of contact	
Telephone number	

Thank you for taking the time to gather the information requested. Please ensure that the completed form is returned securely to the relevant designated safeguarding officer listed below.

Please return this form to the relevant contact listed below:

	<b>Leeds College of Building</b>
Name of contact	Charlotte Duffy
Job Title	Safeguarding Officer
Name of organisation / service	Leeds College of Building, HR Unit, North Street, Leeds, LS2 7QT
Email address	<a href="mailto:cduffy@lcb.ac.uk">cduffy@lcb.ac.uk</a>
Contact telephone number	T: 0113 2226000 Ex: 3845 M: 07872693424

	<b>Notre Dame Catholic 6<sup>th</sup> Form College</b>
Name of Contact	Sarah Dumont
Job Title	Deputy Principal
Name of organisation / service	Notre Dame College– St Mark's Ave, Leeds LS2 9BL
Email address	<a href="mailto:s.dumont@notredamecoll.ac.uk">s.dumont@notredamecoll.ac.uk</a>
Contact telephone number	0113 2946644

	<b>Leeds City College</b>
Name of Contact	Andrew Ottey
Job Title	Head of Safeguarding
Name of organisation / service	Leeds City College, Park Lane Campus, room A2.20
Email address	<a href="mailto:andrew.ottey@leedscitycollege.ac.uk">andrew.ottey@leedscitycollege.ac.uk</a>
Contact telephone number	Tel: 0113 2162055/ 07710138460

	<b>Leeds Arts University</b>
Name	Katrina Welsh
Job Title	Head of Student Support
Name of organisation / service	Leeds Arts University
Email address	<a href="mailto:katrina.welsh@leeds-art.ac.uk">katrina.welsh@leeds-art.ac.uk</a>
Contact telephone number	0113 202 8000

	<b>Elliott Hudson College</b>
Name	Rosie Quashie
Job Title	Assistant Principal
Name of organisation / service	Elliott Hudson College
Email address	<a href="mailto:rosiequashie@elliottthudsoncollege.ac.uk">rosiequashie@elliottthudsoncollege.ac.uk</a>
Contact telephone number	0113 3239777



Children's Services  
Integrated Safeguarding Unit  
Notification to Local Authority Designated Officer  
(Managing Allegations)

**ALLEGATIONS OR CONCERN ABOUT A PERSON WORKING WITH CHILDREN**

This form has been designed to help all agencies working with children record and refer information when it has been alleged that a person who works with children has:

- Behaved in a way that has harmed a child or may have harmed a child.
- Possibly committed a criminal offence against or related to a child; or
- Behaved towards a child or children in a way that indicates she or he may pose a risk of harm to children.

**PLEASE PROVIDE AS MUCH INFORMATION AS YOU CAN AND SEND TO  
[LADO@leeds.gov.uk](mailto:LADO@leeds.gov.uk) WITHIN ONE WORKING DAY**

<b>Date of Notification:</b>	
<b>Date of Alleged Incident:</b>	
<b>Name of Referrer:</b>	
<b>Agency:</b>	
<b>Contact Details:</b>	

**Professional's Details :**

<b>Name :</b>	<b>D.O.B :</b>	<b>Employment Sector:</b>	<b>Occupation:</b>	<b>Employer:</b>

**Home Address :**

**Child/ren's Details (if applicable):**

<b>Name :</b>	<b>D.O.B :</b>	<b>Legal Status i.e. Looked after child (S.31,S.20,LASPO)</b>	<b>Social Worker or Case Worker:</b>	<b>Independent Reviewing Officer:</b>

**Address :**

<b>Detail of Allegation</b>	<b>Referral Details</b> (to include name of referrer, date, time, detail of allegation and professional (s) involved)
-----------------------------	---

<b>Child or young person's view</b>	<b>Has the young person's views been sought: Yes/No</b> (to include when, by whom and detail of interview) If not please specify reason and date when young person will be seen)
<b>Parent or carer's view</b>	<b>Has the parent/carer been notified, and their views sought: Yes/No</b> (to include when, by whom and detail of interview) If not please specify reason )

<b>Have you discussed this concern with the appropriate Line Manager and Human Resources within your organisation?</b>
<b>What is their view</b>

<b>Does the professional have children of their own? if known please give names &amp; ages</b>



**Previous concerns of a safeguarding nature:**

*Please identify (in chronological order) any previous/historical concerns of a safeguarding nature by the professional concerned.*

**Does the professional work with children in any other capacity?**

**Does the professional acknowledge the concern?  
Please consult with HR if advice is required about talking to the member of staff**

*What is their view*

**Do you believe that the individual concerned poses a current risk of significant harm to children and young people in your organisation?**

*Please explain your rationale for both a Yes or No response.*

**In your professional opinion what action should be taken in regard to the individual facing the allegation or concern?**

**If the professional who these concerns are about, is not a member of staff directly employed by your organisation (i.e., an agency worker). Have you discussed this concern with the appropriate**

**Line Manager for the organisation concerned? *(If not, please contact the employer and complete the section below, prior to submitting this notification)***

*What is their view*

**Name of employer:**

**Contact details:**

### **LADO Discussion**

*Please provide relevant details*

**Form Completed by:**

**Contact details:**

**Information entered on MOSAIC: YES**

☐

**NO**

☐

# PREVENT REFERRAL FORM

## REFERRAL PROCESS

Once you have completed this form, please email via secure email arrangements to: [prevent@leeds.gov.uk](mailto:prevent@leeds.gov.uk) and [fimucentral@ctpne.police.uk](mailto:fimucentral@ctpne.police.uk).

All public sector organisations (including schools) have appropriate email security in place. Please contact [prevent@leeds.gov.uk](mailto:prevent@leeds.gov.uk) if you wish to refer from outside this sector.

If you have any questions whilst filling in the form, please call: 0113 535 0810 (Leeds City Council Prevent Team) or 0113 395 4141 (Police Prevent Team).

## INDIVIDUAL'S BIOGRAPHICAL & CONTACT DETAILS

Forename(s):	
Surname:	
Date of Birth (DD/MM/YYYY):	
Approx. Age (if DoB unknown):	
Gender:	
Known Address(es):	
Nationality / Citizenship:	
Immigration / Asylum Status:	
Primary Language:	
Contact Number(s):	
Email Address(es):	
Any Other Family Details:	

## DESCRIBE CONCERNS

In as much detail as possible, please describe the specific concern(s) relevant to Prevent.

### FOR EXAMPLE:

- How / why did the Individual come to your organisation's notice in this instance?
- Does it involve a specific event? What happened? Is it a combination of factors? Describe them.
- Has the Individual discussed personal travel plans to a warzone or countries with similar concerns? Where? When? How?
- Does the Individual have contact with groups or individuals that cause you concern? Who? Why are they concerning? How frequent is this contact?
- Is there something about the Individual's mobile phone, internet or social media use that is worrying to you? What exactly? How do you have access to this information?
- Has the Individual expressed a desire to cause physical harm, or threatened anyone with violence? Who? When? Can you remember what was said / expressed exactly?
- Has the Individual shown a concerning interest in hate crimes, or extremists, or terrorism? Consider *any* extremist ideology, group or cause, as well as support for "school-shooters" or public-massacres, or murders of public figures.
- Please describe any other concerns you may have that are not mentioned here.

## COMPLEX NEEDS

Is there anything in the Individual's life that you think might be affecting their wellbeing or that might be making them vulnerable in any sense?

PERSON WHO FIRST IDENTIFIED THE CONCERNS	
Do they wish to remain anonymous?	Yes / No
Forename:	Referrers First Name(s)
Surname:	Referrers Last Name
Professional Role & Organisation:	Referrers Role / Organisation
Relationship to Individual:	Referrers Relationship To The Individual
Contact Telephone Number:	Referrers Telephone Number
Email Address:	Referrers Email Address
PERSON MAKING THIS REFERRAL (if different from above)	
Forename:	Contact First Name(s)
Surname:	Contact Last Name
Professional Role & Organisation:	Contact Role & Organisation
Relationship to Individual:	Contact Relationship to the Individual
Contact Telephone Number:	Contact Telephone Number
Email Address:	Contact Email Address

RELEVANT DATES	
Date the concern first came to light:	When were the concerns first identified?
Date referral made to Prevent:	Date this form was completed & sent off?

**FOR EXAMPLE:**

- Victim of crime, abuse or bullying.
- Work, financial or housing problems.
- Citizenship, asylum or immigration issues.
- Personal problems, emotional difficulties, relationship problems, family issues, ongoing court proceedings.
- On probation; any erratic, violent, self-destructive or risky behaviours, or alcohol / drug misuse or dependency.
- Expressed feelings of injustice or grievance involving any racial, religious or political issue, or even conspiracy theories.
- Educational issues, developmental or behavioural difficulties, mental ill health (see **Safeguarding Considerations** below).
- Please describe any other need or potential vulnerability you think may be present, but which is not mentioned here.

**OTHER INFORMATION**

Please provide any further information you think may be relevant, e.g., social media details, military service number, other agencies or professionals working with the Individual, etc..

REFERRER'S ORGANISATIONAL PREVENT CONTACT (if different from above)	
Forename:	Referrers First Name(s)
Surname:	Referrers Last Name
Professional Role & Organisation:	Referrers Role / Organisation
Relationship to Individual:	Referrers Relationship To The Individual
Contact Telephone Number:	Referrers Telephone Number
Email Address:	Referrers Email Address

SAFEGUARDING CONSIDERATIONS	
Does the Individual have any stated or diagnosed disabilities, disorders or mental health issues?	Yes / No
Please describe, stating whether the concern has been diagnosed.	
Have you discussed this Individual with your organisations Safeguarding / Prevent lead?	Yes / No
What was the result of the discussion?	
Have you informed the Individual that you are making this referral?	Yes / No
What was the response?	
Have you taken any direct action with the Individual since receiving this information?	Yes / No
What was the action & the result?	
Have you discussed your concerns around the Individual with any other agencies?	Yes / No
What was the result of the discussion?	

INDIVIDUAL'S EMPLOYMENT / EDUCATION DETAILS	
Current Occupation & Employer:	Current Occupation(s) & Employer(s)
Previous Occupation(s) & Employer(s):	Previous Occupation(s) & Employer(s)
Current School / College / University:	Current Educational Establishment(s)
Previous School / College / University:	Previous Educational Establishment(s)

THANK YOU
<p>Thank you for taking the time to make this referral. Information you provide is valuable and will always be assessed. If there is no Prevent concern but other safeguarding issues are present, this information will be sent to the relevant team or agency to provide the correct support for the individual(s) concerned.</p>

## DOCUMENT CONTROL SHEET

Document Name:	Safeguarding Child Protection Policy
Document Owner:	Think Like a Pony CIC
Date last review:	01/09/24
Review Date:	01/09/25
Version 12	